



Institut Langevin
ONDES ET IMAGES



ESPCI PARIS | PSL



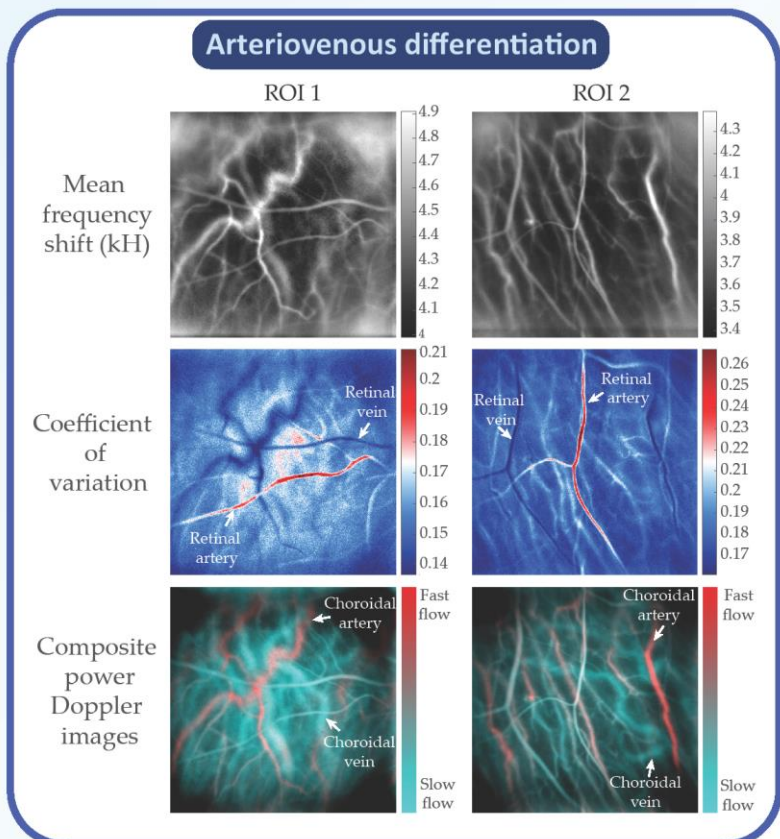
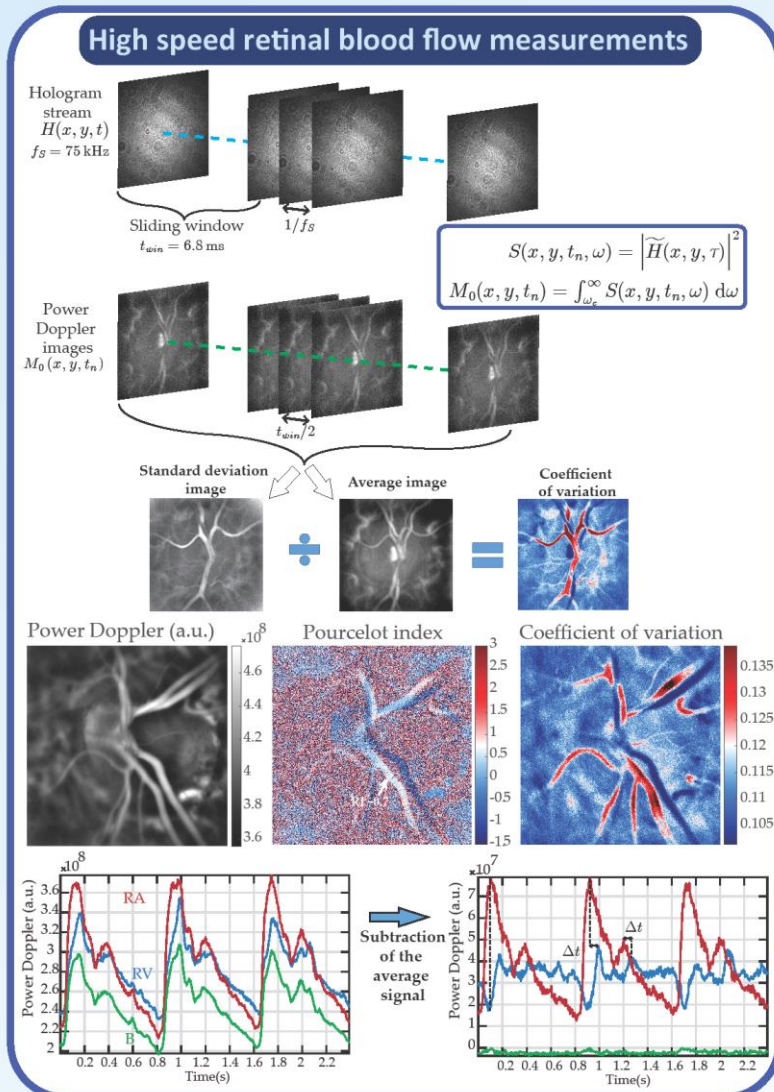
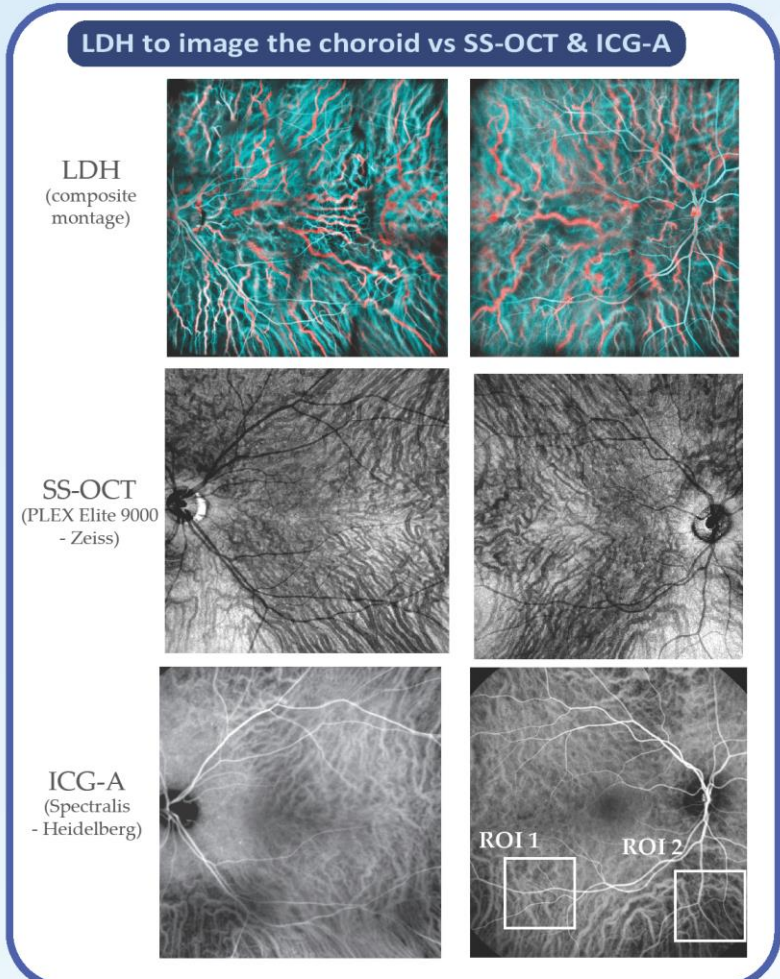
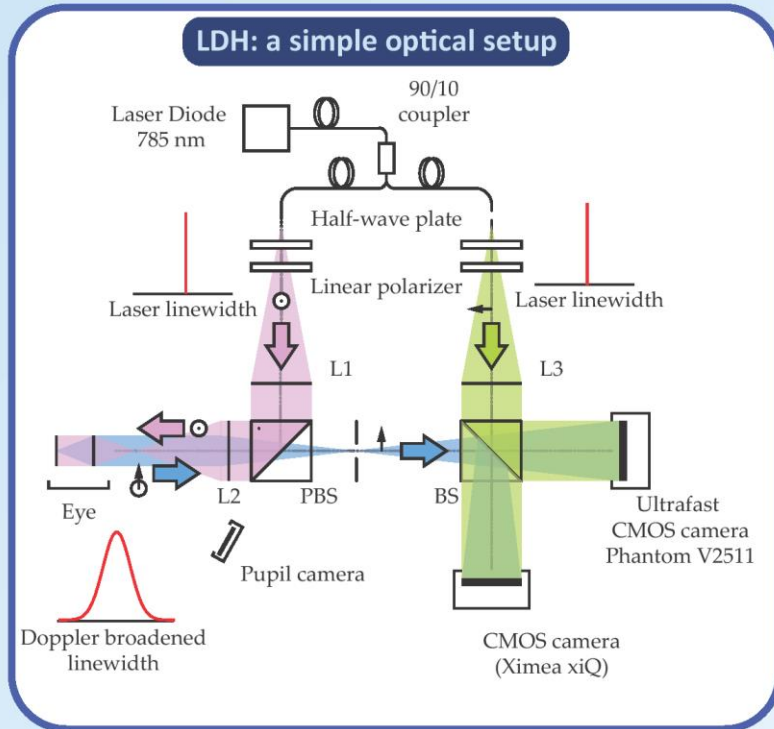
QUINZE-VINGTS

Laser Doppler holography clinical application in ophthalmology

Léo Puyo¹, Michel Paques², Mathias Fink¹, José-Alain Sahel², and Michael Atlan¹

1 : Institut Langevin, CNRS UMR 7587, ESPCI Paris, 1 rue Jussieu, 75005 Paris, France

2 : CHNO des Quinze-Vingts - 28 rue de Charenton, 75012 Paris. Institut de la Vision - 17 rue Moreau, 75012 Paris. France



Reference : [1] L. Puyo, M. Paques, M. Fink, J.-A. Sahel, and M. Atlan, "In vivo laser Doppler holography of the human retina," Biomed. Opt. Express 9, 4113–4129 (2018).
 [2] L. Puyo, M. Paques, M. Fink, J.-A. Sahel, and M. Atlan, "Choroidal vasculature imaging with laser Doppler holography," Biomed. Opt. Express 10, 995–1012 (2019).
 [3] L. Puyo, M. Paques, M. Fink, J.-A. Sahel, and M. Atlan, "Waveform analysis of human retinal and choroidal blood flow with laser Doppler holography" Biomed. Opt. Express [Accepted]